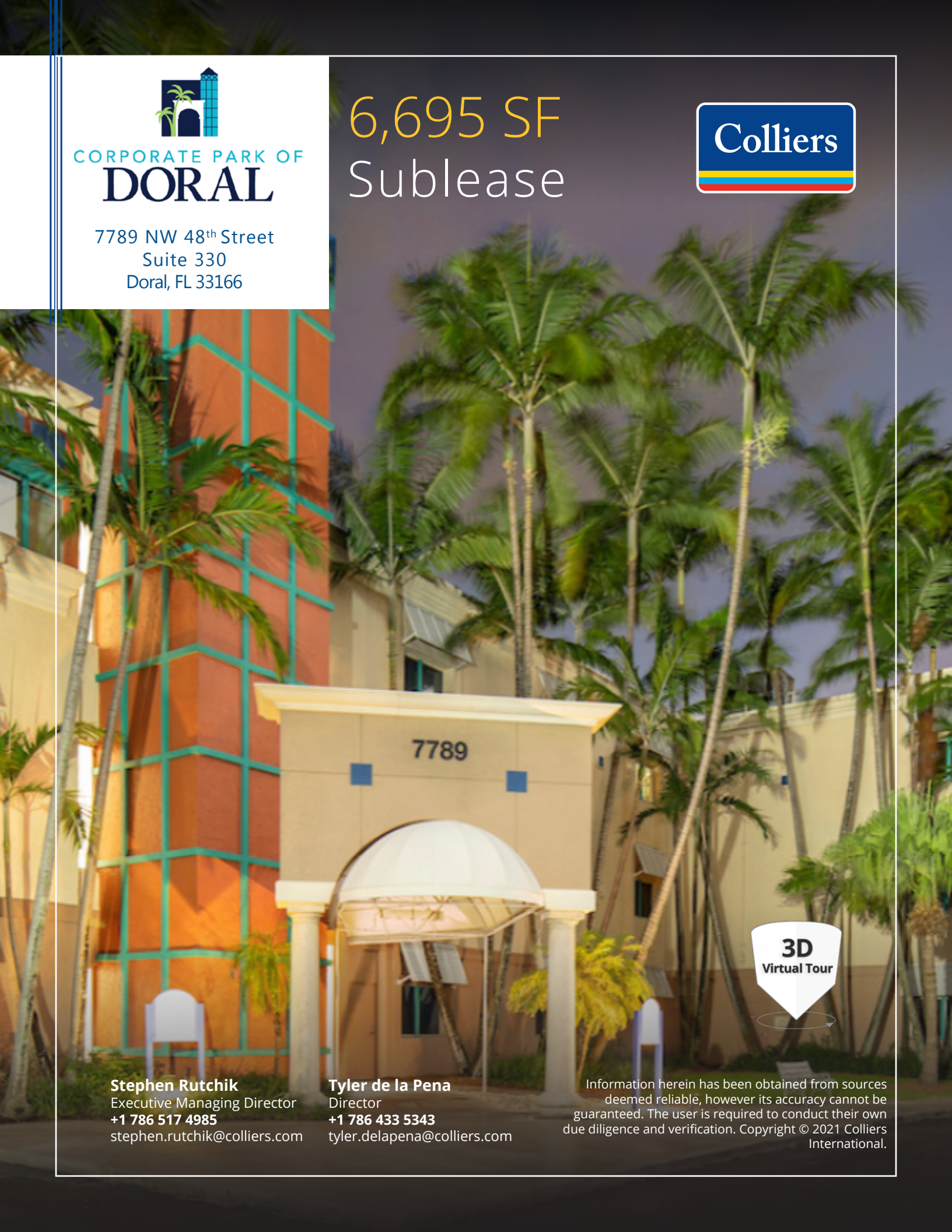




CORPORATE PARK OF
DORAL

7789 NW 48th Street
Suite 330
Doral, FL 33166

6,695 SF
Sublease



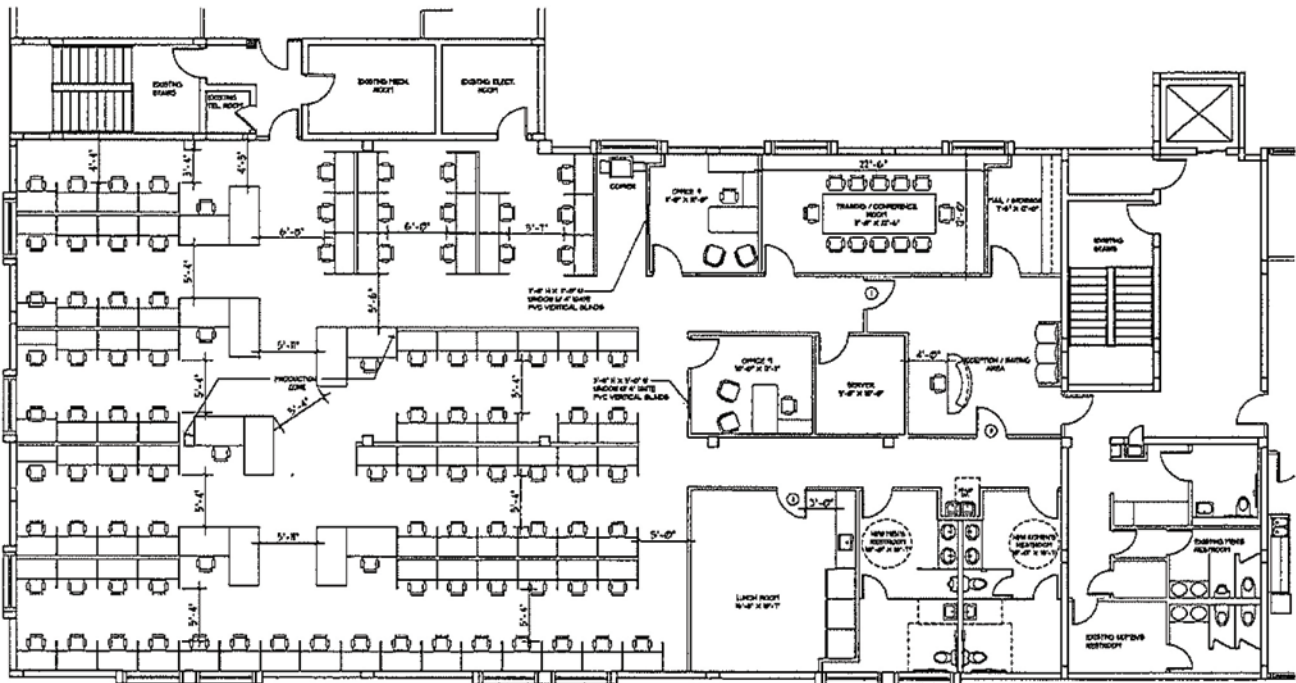
Stephen Rutchik
Executive Managing Director
+1 786 517 4985
stephen.rutchik@colliers.com

Tyler de la Pena
Director
+1 786 433 5343
tyler.delapena@colliers.com

Information herein has been obtained from sources deemed reliable, however its accuracy cannot be guaranteed. The user is required to conduct their own due diligence and verification. Copyright © 2021 Colliers International.

- » 6,695 SF
- » Plug-and-Play sublease opportunity in Corporate Park of Doral
- » Term through August 31, 2025
- » FF&E negotiable
- » Open Floorplan

Suite 330 Floorplan



6,695 SF
Sublease

7789 NW 48th Street, Suite 330, Doral, FL 33166

Doral Corporate Center

- » 24-hour security
- » On site property management
- » 5/1,000 parking ratio
- » Class B office building in the heart of Downtown Doral
- » Easy access to the 826 Palmetto and Dolphin Expressway
- » Central Doral location
- » Easy access to major dining and retail options
- » 12 minutes to Miami International Airport
- » 20 minutes to Downtown Miami
- » Ample outdoor space



Stephen Rutchik
+1 786 517 4985
stephen.rutchik@colliers.com

Tyler de la Pena
+1 786 433 5343
tyler.delapena@colliers.com