

9155 S Dadeland Boulevard

DADELAND CENTRE II

Available Immediately
6,828 RSF Class A office space
Divisible



[Click here for Virtual Tour](#)



Stephen Rutchik

Executive Managing Director
786 517 4985
stephen.rutchik@colliers.com

Tom Farmer

Managing Director
786 517 4967
tom.farmer@colliers.com

Colliers

6,828 RSF CLASS A OFFICE SPACE FOR SUBLEASE

9155 SOUTH DADELAND BOULEVARD | MIAMI, FL

Size	6,828 SF (divisible)	FF&E	Furniture negotiable
Floor	16th Floor	Term	August 31, 2024

Available Immediately

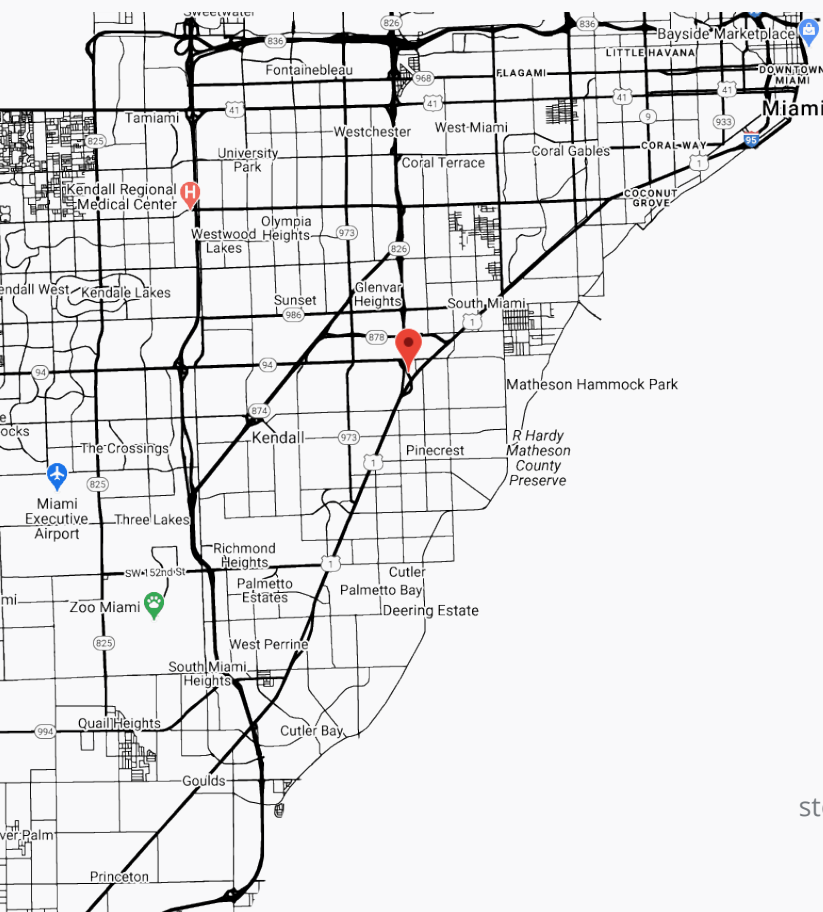
THE BUILDING

- Grand entrance lobby and elegant common area finishes
- 24-hour controlled access
- Energy star labelled
- Hurricane impact glass
- Garage parking



LOCATION

- Located in Dadeland - an eclectic, dynamic, live-work-play urban edge neighborhood
- Close proximity to Dadeland Mall, Sunset Place, and multiple retail and dining options for employees
- Rapid access to Brickell, Downtown Miami and Miami International Airport via Metrorail
- Easy access from Coconut Grove, Coral Gables, Pinecrest, South Miami and Kendall via US-1, the Palmetto Expressway and North Kendall Drive



Stephen Rutchik

786 517 4985

stephen.rutchik@colliers.com

Tom Farmer

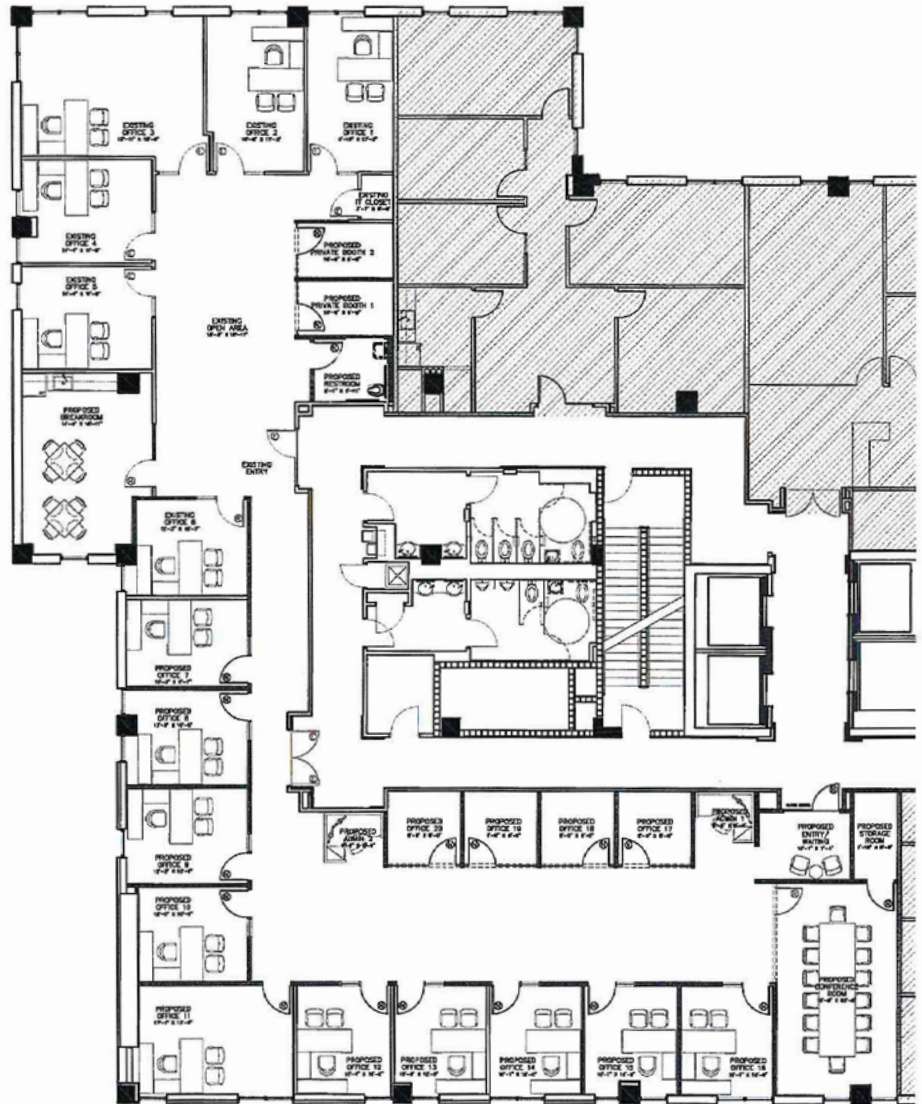
786 517 4967

tom.farmer@colliers.com

6,828 RSF CLASS A OFFICE SPACE FOR SUBLEASE
9155 SOUTH DADELAND BOULEVARD | MIAMI, FL

FLOORPLAN

- Excellent city views
- Tenant-controlled HVAC
- 9" ceilings
- Full height windows
- Lots of natural light
- Large conference room
- Multiple entries and private offices allow socially distant workspace



Stephen Rutchik
786 517 4985
stephen.rutchik@colliers.com

Tom Farmer
786 517 4967
tom.farmer@colliers.com



Stephen Rutchik
786 517 4985
stephen.rutchik@colliers.com

Tom Farmer
786 517 4967
tom.farmer@colliers.com

